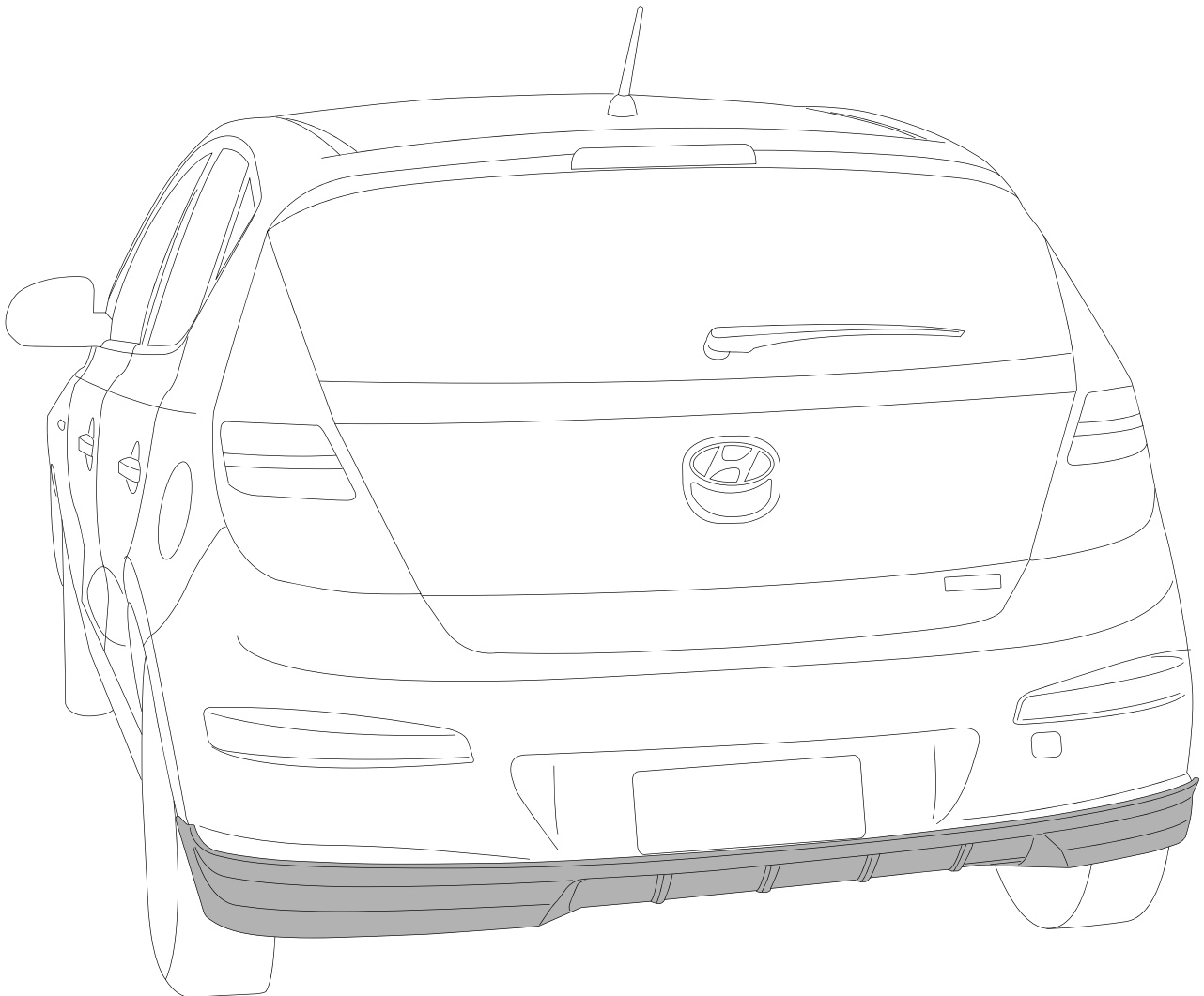


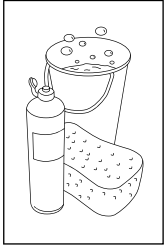
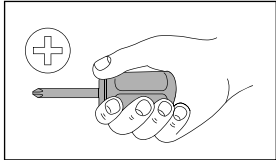
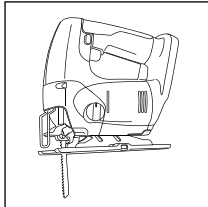
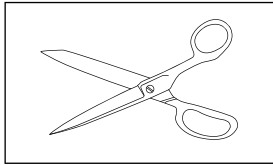
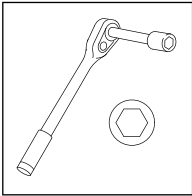
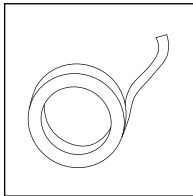
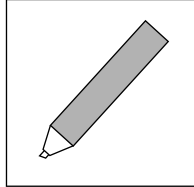


**Genuine**  
**HYUNDAI**  
**Accessories**

**FITTING INSTRUCTIONS FOR  
HYUNDAI - i30 HATCH  
REAR SKIRT**



## 1. TOOLS AND MATERIALS REQUIRED

 <p><b>CLEANING MATERIALS</b></p>	 <p><b>No. 2 PHILLIPS SCREWDRIVER</b></p>	 <p><b>JIGSAW OR AIRSAW REQUIRED IF TOW BAR FITTED</b></p>	 <p><b>SCISSORS</b></p>
 <p><b>10mm SOCKET &amp; WRENCH</b></p>	 <p><b>MASKING TAPE</b></p>	 <p><b>NON PERMANENT MARKER OR CHINAGRAPH PENCIL</b></p>	

### COMMENTS:

Place these instructions in vehicle's glove box after installation is complete

#### Care Instructions:



Clean Rear Skirt with a mild detergent and water solution.



Do not use abrasive cleaners or solvents.

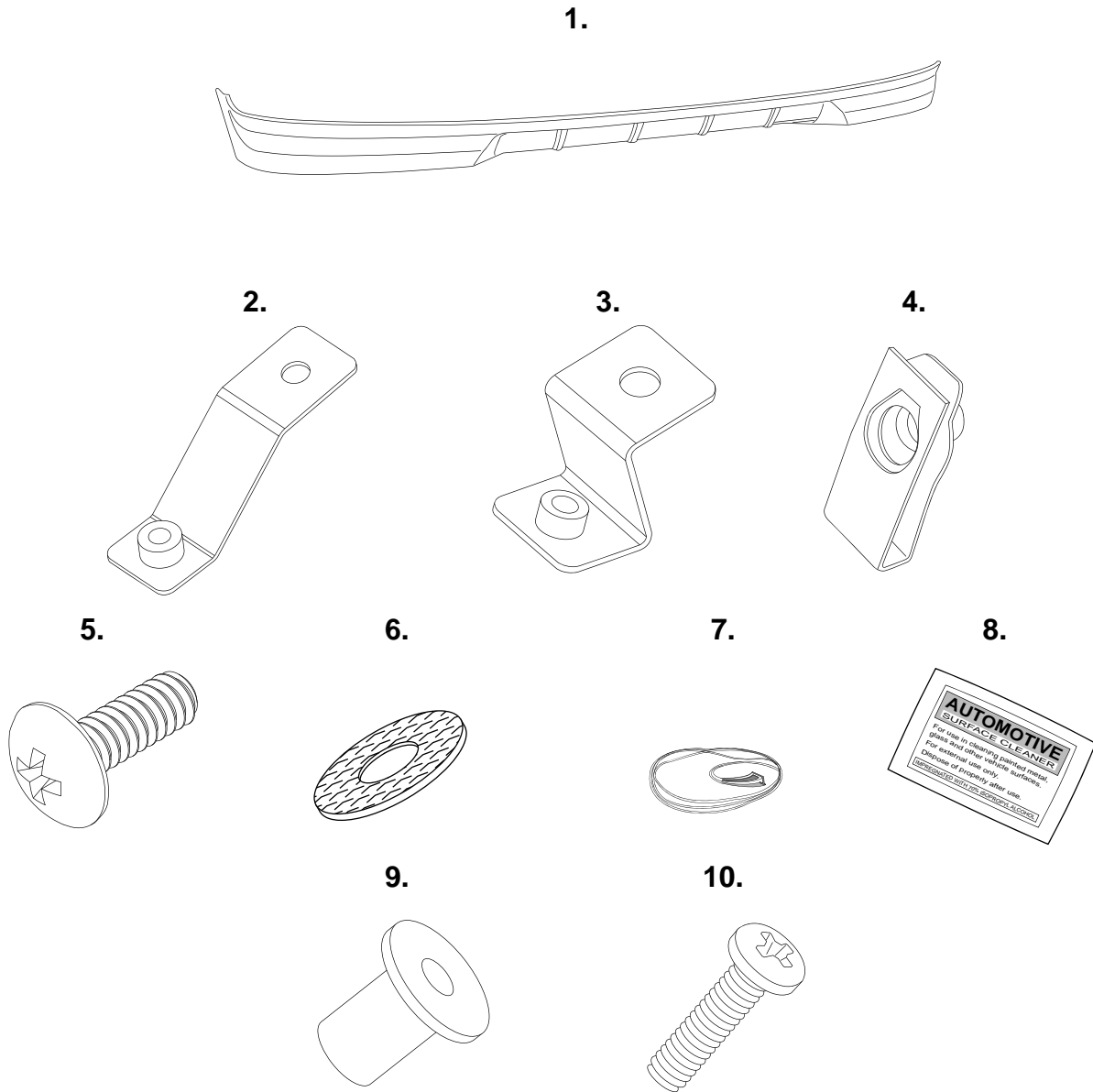
### IMPORTANT



**NOTE:** If a towbar is fitted to the vehicle, please carry out the instructions from page 7, using the template on page 8 for the tow bar modifications to Rear Skirt.

- For unpainted product - Rear Skirt must be painted and cured sufficiently prior to installation onto the vehicle.
- This product must be installed exactly as specified in these instructions. Failure to do so may result in improper fit and/or retention.
- Installation to be completed by 2 people.
- Do not drive the vehicle within 6 hours (Minimum) of installing.
- Avoid installing at temperature less than 10° C (50° F). Ideal installation temperature is between 20° C - 40° C (69° F - 105° F). If installing at temperatures less than 10° C (50° F) do not drive vehicle for at least 12 hours.
- The use of an automatic car wash is not recommended, as damage to Rear Skirt may occur.

## 2. KIT DRAWING AND CONTENTS



ITEM NO.	PART NUMBER	QTY	DESCRIPTION
1	P05160	1	Rear Skirt
2	CLIP1467	2	Outboard Clip
3	CLIP1328	4	Centre Clips
4	NUTS0155	4	M5 'U' Nut
5	SCRW0374	10	M5 x 16mm Phillips Head Screw
6	WASH0099	10	M5 Fibre Washer
7	MISC1779	2.2m	Trim Edge Extrusion
8	MISC0052	2	Alcohol Wipe
9	FAST0263	2	Well Nut
10	SCRW0375	2	Well Nut Screw

### 3. INSTALLATION STEPS

**1** REMOVE NUMBER PLATE

**2** CLEAN & DRY ALL INSTALLATION AREAS

**1.** Remove and retain number plate. Thoroughly clean and dry the installation areas, ensuring insides of wheel arches and under the rear bumper are free from dirt, grease and wax.

**1** REMOVE & RETAIN (1) SCREW

**3** REMOVE & DISCARD (2) SCRIVETS

**2** REMOVE & RETAIN (1) SCREW

**2.** Remove one (1) screw from the bottom of the wheel arch and retain as shown. Remove one (1) screw from under rear bumper and retain as shown. Remove two (2) scrivenets from under rear bumper and discard as shown. **Repeat step for other side of the vehicle.**

**2** PULL BACK BLACK LINER

**3** FIT (1) M5 'U' NUT

**1** FIT (1) M5 'U' NUT

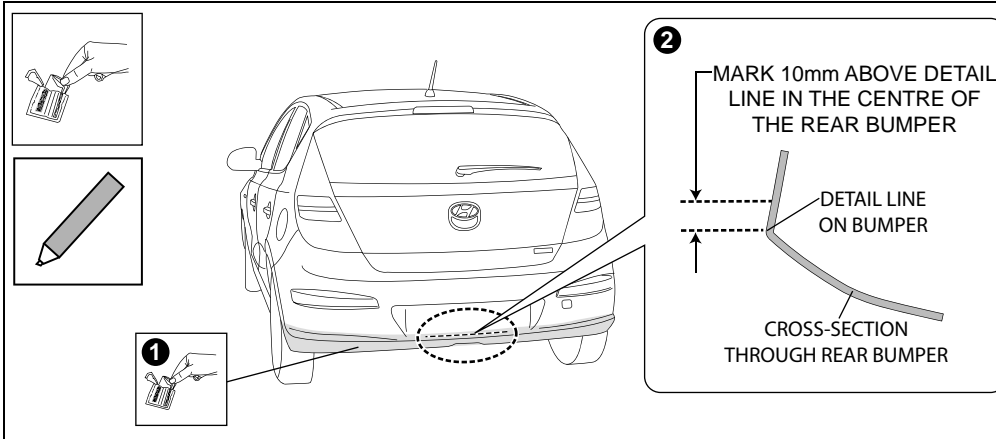
**3.** Install two (2) M5 'U' nuts to the rear bumper. Pull back the black liner to gain access to the hole position located near the middle of the rear bumper as shown. **Repeat step for other side of the vehicle.**

**2** FIT (2) SHORT CLIPS

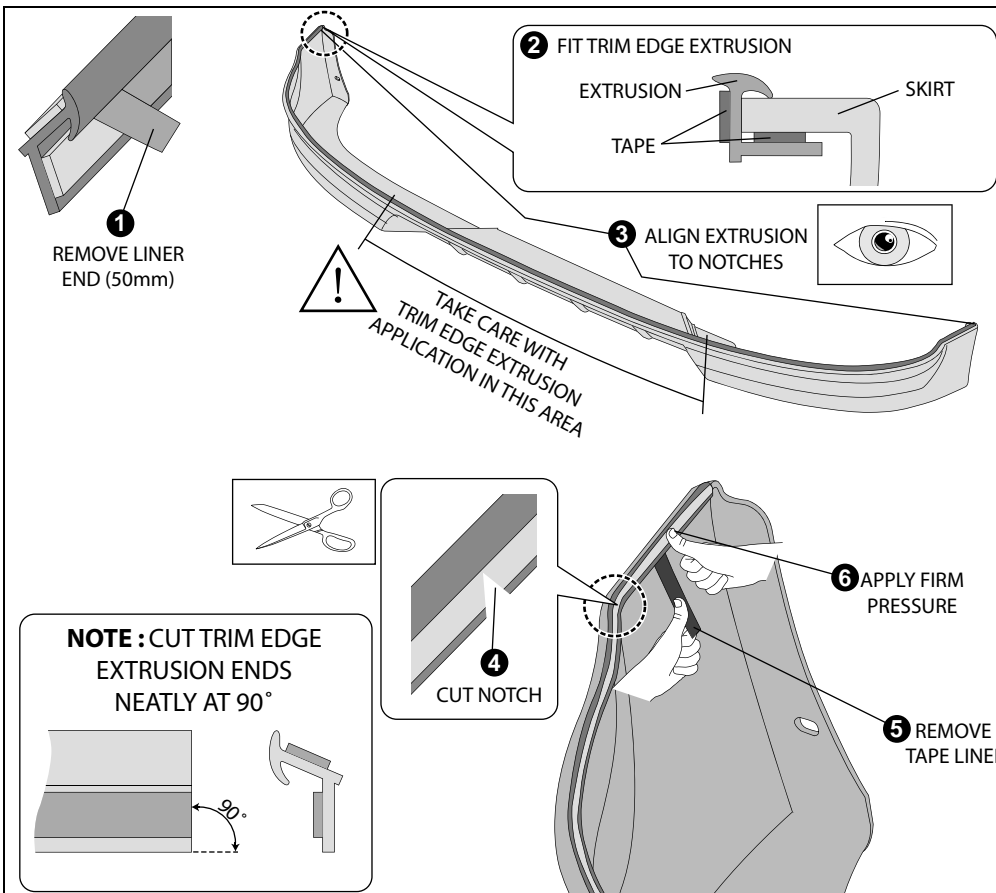
**3** INSTALL (2) M5x16MM SCREWS and M5 FIBRE WASHERS

**1** INSTALL LONG CLIP WITH PREVIOUSLY REMOVED SCREW

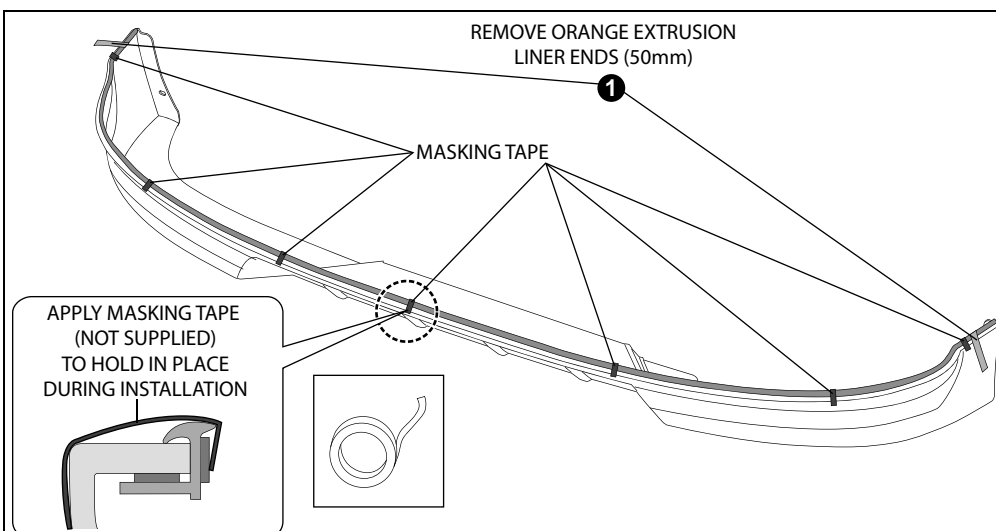
**4.** Install one (1) long clip using the previously removed screw to the outer hole positions as shown. Install two (2) short clips using two (2) M5x16mm screws and M5 fibre washers to the 2 hole positions fitted with the M5 'U' nuts as shown. **Repeat step for other side of the vehicle. Do Not fully tighten at this stage.**



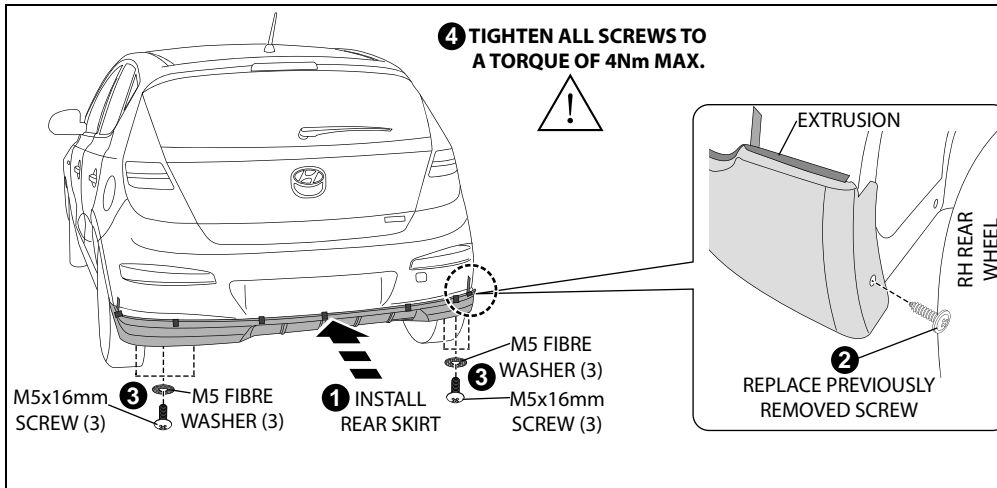
**5.** Clean the shaded area using the alcohol wipes provided and wipe away residue with a dry clean cloth. With a non permanent marker or chinagraph pencil, mark a line 10mm up from the rear detail line in the centre of the bumper as shown. This marks the top position for the rear skirt.



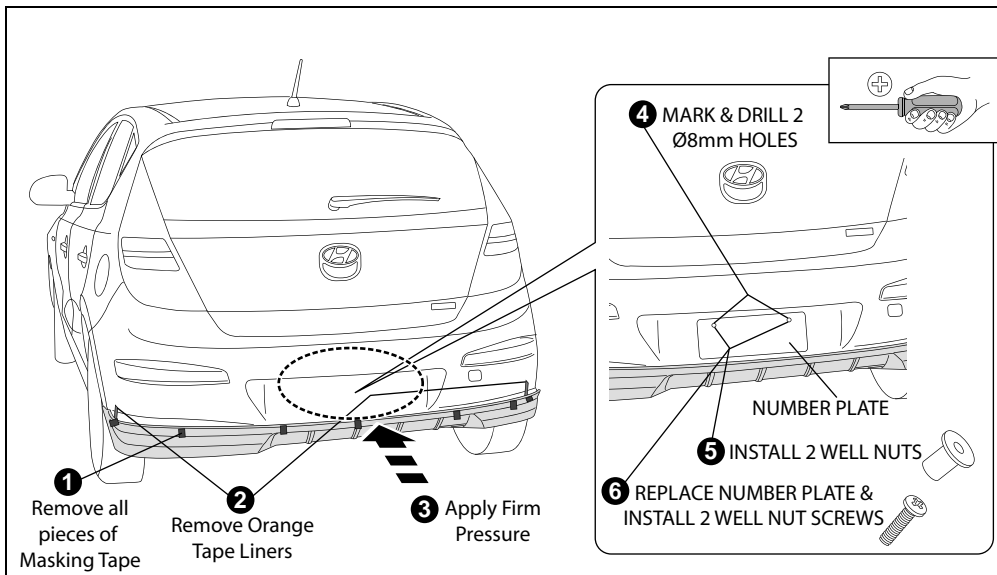
**6.** Remove approximately 50mm of the internal protective liner from the trim edge extrusion as shown, and fit to the rear skirt. Cut trim edge extrusion to length for a neat fit. **Note: It is important that care is taken with the installation of the trim edge extrusion, particularly across the centre of the part, as it will effect the appearance when the rear skirt is installed to the vehicle.** Take care in cutting the ends of the trim edge extrusion to 90°, as this will effect the final appearance on the vehicle. Ensure extrusion is aligned with the notches on the part. To assist placement of extrusion around corners, notch the extrusion using scissors as shown. Pulling at right angles to the extrusion, remove the liner from the extrusion in small portions and apply thumb pressure to ensure that it adheres to the rear skirt as the extrusion is installed.



**7.** Peel 50mm from each end of the protective liner from the trim edge extrusion. Ensure these tape liners are accessible when rear skirt is fitted to the vehicle. Use masking tape (as shown) to hold if required.

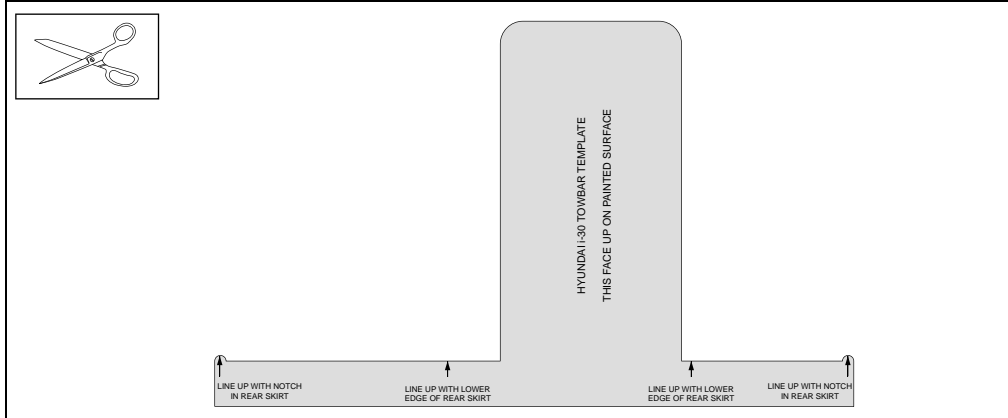


**8.** Using two (2) people install rear skirt to vehicle. The rear skirt position is 10mm above the lower detail line of the bumper as previously marked in step 5. Position one side then the other, some pressure may be required to slide the rear skirt over the detail line. With one person supporting the rear skirt reinstall the two (2) screws previously removed from the wheel arches as shown. Loosely fit six (6) M5x16mm screws and M5 fibre washers as shown.

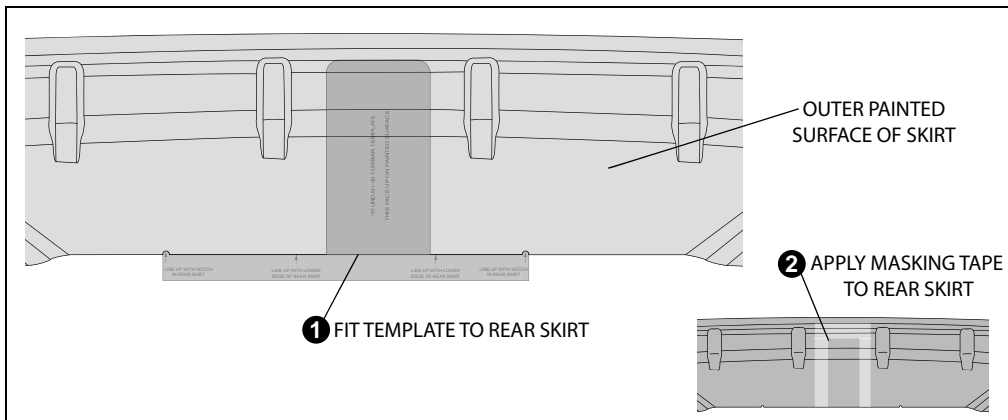


**9.** Remove masking tape holding trim edge extrusion onto skirt. Remove orange tape liner and apply firm pressure along taped area to ensure maximum adhesion. **Tighten all screws to Torque 4Nm.** Trial fit number plate to vehicle ensuring it sits above the rear skirt, if not, reposition and mark and drill two (2) Ø8mm holes, using the existing number plate holes as a guide. Fit two (2) well nuts into the Ø8mm holes. Replace number plate and install with two (2) well nut screws. Remove marking on bumper added in step 5.

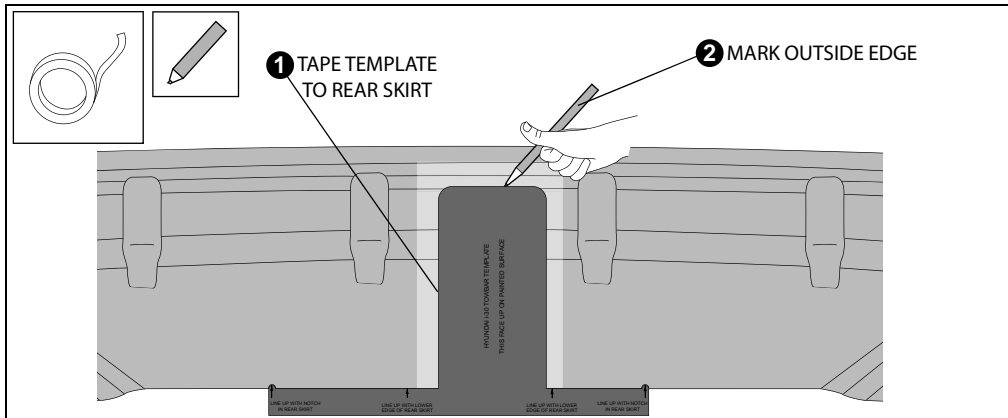
CONTINUED OVER THE PAGE FOR FITMENT WITH TOWBAR



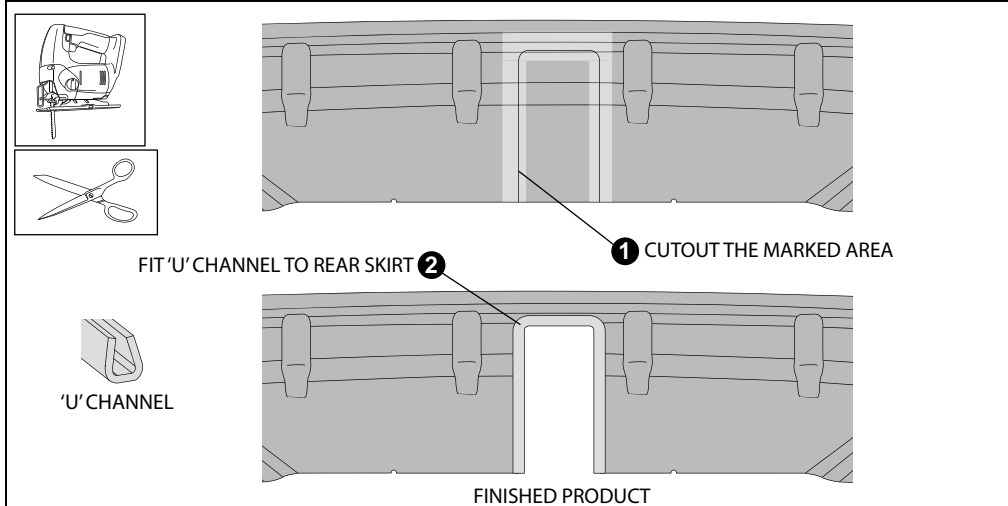
**1.** Carefully cut out the template on page 8.



**2.** Note the notches on the bottom edge of the rear skirt. Lay template in position on the painted surface of the skirt, aligning it to the notches and note areas to be cut-out. Remove template and apply masking tape to rear skirt on the painted surface in areas to be cut-out as noted.



**3.** Use masking tape to attach template to skirt, and carefully mark around the outside edge. **NOTE:** If the template is not positioned accurately, the cut-out profile will be incorrect.



**4.** Remove template and cut out the marked area with a suitable tool (e.g. Jigsaw or Airsaw). Clean up edge with a file or sandpaper and remove masking tape. **NOTE: It is extremely important that care is taken when handling the part after this section is removed, as the skirt will become weak in this area.** Remove 'U' channel extrusion from the towbar cut-out on the rear bumper and fit it to the rear skirt and trim to length if required as shown.

**HYUNDAI i-30 TOWBAR TEMPLATE**  
**THIS FACE UP ON PAINTED SURFACE**

